

Avalue Healthcare

MedTech Solution-Friendly Platform

Medical Panel PC / Monitor / Tablet

Medical Box PCs / AI PCs

Medical Power & Workstation

Healthcare Terminal

Patient Information Display



Bridge Innovation & Clinical Practice

Avalue Healthcare delivers healthcare computing hardware platforms built on deep medical know-how and ecosystem resources, bridging advanced technology with clinical practice to support trusted integration and long-term healthcare deployment.



Clinical-Driven Design

Designed around real clinical workflows, ensuring intuitive operation, clear alerts, infection control, and glove-friendly interaction.



Medical-Grade Engineering

Professional medical electronic and mechanical design delivering stable operation with isolated I/O and balanced thermal-acoustic performance for continuous clinical use.



Regulatory & Quality Readiness

Built for global medical deployment with complete verification, validation, and certification-ready documentation.



Reliability & Lifecycle Support

Designed for long-term deployment with component longevity, trusted connectivity, and end-to-end project support.



Flexible Customization

Leveraged from off-the-shelf platform architectures to accelerate time-to-market, through modular I/O, IET expansion, BIOS fine-tuning, and private labeling.





Inpatient Care & Interaction

Enable intuitive interaction and intelligent inpatient monitoring across bedside terminals, nurse call systems, and patient information displays.



Aesthetic & Patient-Friendly



Easy Data Synchronization



Workflow Automation

Corridor Display

Ward status & patient visibility



VNS-10WR2/ VNS-10WAD

- 10.1" 350nits clear display, OS support (Win/Android) differed by models
- Configurable LED light for alarm notification
- Built-in Power over Ethernet for quick installation

Bedside Interaction Terminal

Patient communication & nurse interaction

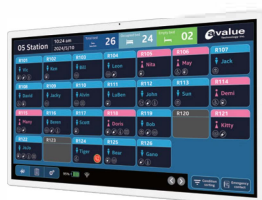


APC-15WR2

- 15.6" touch panel PC with optional handset
- Front speaker & camera for nurse-patient interaction
- Single powered LAN for data communication

Digital Display Bulletin/ Nursing Dashboard

Centralized ward information & announcements



APC-32WR6

- 32" clear display with portrait mode support & 5W speakers for quality sound
- LAN connectivity with optional wireless backup
- Support Android 14 for partner's CMS software development



**Medical Alarm
Compliance**



**Multi-Source Vitals
Connectivity**



**Easy Hygiene
Design**



Critical Care Monitoring

Deliver real-time monitoring and timely clinical response through programable alarms, aggregated vital data, and flexible deployment in high-acuity environments.

ICU Bedside Terminal

Vitals aggregation & alarm awareness



HID-1337/HID-1540

- Multiple I/O ports for vital sign aggregator & infusion flow set-up
- Visual & audio alarm for event classification & alarm notification
- Easy disinfection flat front & anti-microbial finishing

Portable Vitals Gateway

Real-time patient status access on the move



CAXA0

- 10.1" tablet with global medical certificates
- Rich accessory for easy portability and charging
- Built-in NFC for medical staff identification

Mobile ICU Stand

Flexible mobility in space-limited ICU settings



EcoStand

- Lightweight & small footprint for space saving
- Power on pole and add-on UPS module available
- Accessory options tailored for ICU workflows

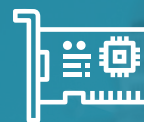
Add-on Medical Power System

Plug & play power supply



EPB-1001

- 184 Wh hot-swappable battery
- Selectable 12V/19V outputs
- Quick integration via VESA mounting kit



**Flexible System
Expansion**



**High-Quality
Voice Capture**



**Rapid OR
Deployment**

Therapy & OR Integration

Facilitate efficient surgical workflows and patient outcome through integrated video distribution, navigation, and tele-consultation across hybrid OR settings.

Tele-OR Consultation Terminal

Remote video collaboration and specialist consultation



HID-2146

- Directional microphone array and high-quality speakers for clear remote communication
- GPU-ready architecture for voice AI and advanced processing
- Front IP65 and rear IP54 design for easy disinfection

Video Streaming Workstation

Multi-source video routing and real-time display



MAB-T690 & Medical Monitor

- Up to 5 PCIe slots for no-latency streaming and GPU card expansion
- High-performance computing for real-time surgical visualization
- Large-format medical monitors supporting multi-modality imaging

Navigation Robot Console

Robot control and surgery planning



MAB-T600 Series

- Added-on GPU for surgical route planning & real-time guidance
- High performance platform for machine vision & robotic control
- Power and I/O customization for robotic system integration

Tele-OR Stand

All-in-one hygienic workstation deployment



GeniStand

- 432 Wh high power capacity
- IP-67 medical-grade power design
- Support PTZ camera integration for surgery broadcasting



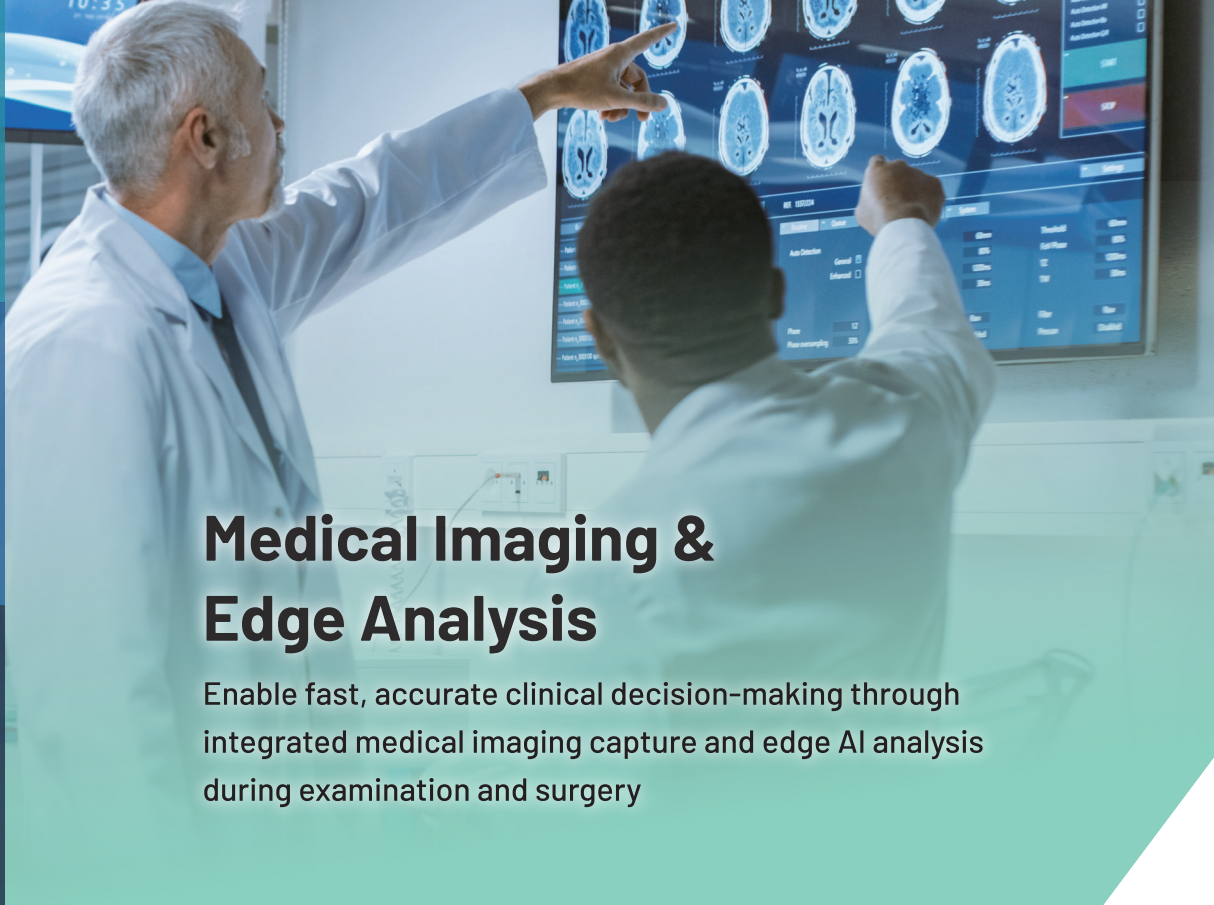
Diverse AI
Performance



Medical Imaging
Visualization



Flexible
Architecture



Medical Imaging & Edge Analysis

Enable fast, accurate clinical decision-making through integrated medical imaging capture and edge AI analysis during examination and surgery

Medical Imaging Terminal

Medical imaging acquisition from medical modality

HID-2340

- IET module for I/O isolation and video output
- M.2 expansion for image capture card
- Optional AG coating touch panel



Edge AI Imaging Workstation PC

On-device AI analysis for immediate clinical insight

MAB-T660D

- PCIe expansion for GPU computing and imaging capture
- 12V-24V DC input for easy integration on carts and mobile systems
- High-performance platform for real-time edge AI inference



Imaging Workstation Display

Medical-grade visualization for imaging workflows

23.8" - 32" Medical Monitors

- Accurate DICOM grayscale & color rendering for imaging review
- Multiple video interfaces with loop-through support
- IP-rated design with optional AG PCAP touch screen



Medical Panel PC



Model Number		HID-2146	HID-1337	HID-1540	HID-2138	HID-2340
Processor		Arrow Lake U Core Ultra 5/7 processor	Intel® Alder Lake-N Processor; Intel® Processor N97, 6M Cache, up to 3.60 GHz (12W)	12th Gen Intel® Core™ i7/ i5/i3/ Celeron Processor	11th Gen Intel® Core™ i7/ i5/i3/ Celeron® processor	12th Gen. Intel® Core™ i7/ i5/ Celeron processor
System Memory		2 x 262-pin DDR5 600MHz SO-DIMM socket up to 96GB	1 x 262-pin DDR5 800MHz SODIMM socket up to 16GB	1 x 262-pin DDR5 4800MHz SO-DIMM socket up to 32GB (min. 8GB)	2 x 260-pin DDR4 3200MHz SODIMM socket up to 64GB	1 x 262-pin DDR5 4800MHz SODIMM socket up to 32GB (min. 8GB)
Expansion Slots		1 x PCIe x4 slot 1 x M.2 Key E 2230 for Wi-Fi (1 x PCIe x1 & USB 2.0 Signal) 1 x M.2 Key B 2280 for AI card (PCIe x 2) 1 x IET expansion (optional)	1 x M.2 Key E 2230 (PCIex1, USB2.0)	1 x M.2 Key B 2242/3042/3052 (for 5G or storage) 1 x M.2 Key E (WIFI module)	1 x low profile PCIe 1 x M.2 Key B (5G module or storage)	1 x M.2 Key B 3042/3052/2280 1 x M.2 Key E (WIFI module) 1 x IET expansion (optional)
Storage		2 x M.2 Key M storage	1 x M.2 Key B 2242/3042/3052 SATA III SSD	1 x M.2 Key M storage	1 x M.2 Key B 256 GB storage	1 x M.2 Key M storage 1 x 2.5" SATA III SSD
I/O Ports	USB Type C	1	1	1	2	1
	USB 3.2	2	4	3	-	3
	USB 3.0	-	2	-	-	-
	USB 2.0	4	-	1	2	1
	RS-232	-	-	-	-	-
	RS-232/422/485	1	1	1	-	1
	LAN by RJ-45	1 x 2.5 GbE	2 x 2.5 GbE	2 x 2.5 GbE	2 x 2.5 GbE	2 x 2.5 GbE
	HDMI	1	-	-	-	-
	Audio	1 x Audio Combo Jack	-	1 x Audio Combo Jack	1 x Audio Combo Jack	1 x Audio Combo Jack
	Optional I/O	Via IET board: 5KV isolated USBx2/COM/LAN	-	-	1 x RS-232	Via IET board: Option 1: 5KV isolated USB/COM/LAN; Option 2: HDMI/ Audiox2/ USB 2.0x2/COM (pin header)
Display	LCD Size	21.5"	13.3"	15.6"	21.5"	23.8"
	Resolution	1920 x 1080	1920 x 1080	1920 x 1080	1920 x 1080	1920 x 1080
	Brightness	250 nits	300 nits	300 nits	250 nits	250 nits
	Contrast Ratio	1000:1	600:1	1000:1	1000:1	3000:1
	Touch Type	Projective Capacitive	Projective Capacitive	Projective Capacitive	Projective Capacitive	Projective Capacitive
LED Indicator		-	3-color LED bar indicator	3-color LED bar indicator	-	-
Speaker	Standard	2 x 2W	2 x 5W	2 x 5W	2 x 2W	2 x 2W
	Optional	20W soundbar	-	-	-	-
Data Collection	Standard	-	-	Front 5.0M AF camera, NFC	NFC	Front 5.0M AF camera, NFC
	Optional	Noise-cancelling mic array, 5.0M AF camera module, Imprivata RFID, 2D barcode scanner	Imprivata RFID	-	Front 5.0M AF camera, barcode scanner, handset	-
Wireless Communication		Optional: WIFI/ BT module	Optional: WIFI/ BT module	Optional: WiFi/BT module	Optional: WiFi/BT dongle	Optional: WiFi/BT module
Power	Power Input / Adapter	24V DC / 180W medical power adapter	24~36V DC / 72W medical power adapter	19V DC / 120W medical power adapter	19V DC / 90W medical power adapter	24V DC /120W medical power adapter
	DC Power Output	12/24V DC, 48W	-	-	-	-
	Battery	Optional built-in battery				
IP Rating		Front IP65 / Back IP54	Front IP65	Front IP65	Front IP65	Front IP65
Dimension (mm)		510 x 321 x 27.5	198 x 325 x 38	400 x 263 x 42.5	539.6 x 342.6 x 45.4	592 x 382 x 49.5
Weight (kg)		8.0	1.8	2.8	4.8	6.0
Mounting		VESA 100x100	VESA 75x75	VESA 75x75 / 100x100	VESA 75x75 / 100x100	VESA 75x75 / 100x100
Certification		Medical EMC & Safety: EN/IEC 60601-1, 60601-1-2 UL60601-1, FCC Class B	CE Medical EMC & Safety: EN/IEC 60601-1, 60601-1-2 IEC 60601-1-8 Compliance, UL60601-1, FCC Class B	CE Medical EMC & Safety: EN/IEC 60601-1, 60601-1-2 IEC 60601-1-8 Compliance, UL60601-1, FCC Class B	CE Medical EMC & Safety: EN/IEC 60601-1, 60601-1-2 UL60601-1, FCC Class B	CE Medical EMC & Safety: EN/IEC 60601-1, 60601-1-2 UL60601-1, FCC Class B, CCC
OS Information		Win10 / Win11 / Linux	Win10 / Win11 / Linux	Win10 / Win11 / Linux	Win10 / Win11 / Linux	Win10 / Win11 / Linux

Healthcare Information Terminal



Model Number		APC-32WR6	VNS-10WR2	APC-15WR2	VNS-10WAD	VNS-15WAD
Processor		Rockchip RK3576S Quad core cortex A53+Quad core cortex A72	Rockchip RK3568 Arm Quad Cortex-A55, up to 2.0GHz	Rockchip RK3568 Arm Quad Cortex-A55, up to 2.0GHz	Intel® Processor N50, 6M Cache, up to 3.4 GHz	Intel® Alder Lake-N N50
System Memory		Onboard 4GB LPDDR4/5	4GB LPDDR4	4GB LPDDR4	8GB LPDDR4	8GB LPDDR5
Expansion		-	1 x M.2 Key B (SSD storage or LTE module)	1 x M.2 Key B (SSD storage or LTE module)	-	-
Storage		Onboard 64GB eMMC	1 x 64GB eMMC, 1 x Micro SD	1 x 64GB eMMC, 1 x Micro SD	1 x 64GB eMMC, 1 x Micro SD	1 x 64GB eMMC, 1 x Micro SD
Touch Type		Projective Capacitive	Projective Capacitive	Projective Capacitive	Projective Capacitive	Projective Capacitive
I/O Ports	USB Type C	1	-	-	-	-
	USB 3.2	-	-	-	-	-
	USB 3.0	1	2	2	2	2
	USB 2.0	1	-	-	-	-
	RS-232/485	-	1(RJ-45 type)	1(RJ-45 type)	1(RJ-45 type)	1(RJ-45 type)
	LAN by RJ-45	1	1	1	1	1
	HDMI-in	1	-	-	-	-
	Audio	-	1	1	1	1
Display	LCD Size	32"	10.1"	15.6"	10.1"	15.6"
	Resolution	1920 x 1080	1280 x 800	1920 x 1080	1280 x 800	1920 x 1080
	Brightness	300 nits	350 nits	400 nits	350 nits	220 nits
	Contrast Ratio	1000:1	800:1	800:1	800:1	800:1
LED Indicator		-	2 x Full color light bar	2 x Full color light bar	2 x Full color light bar	2 x Full color light bar
Speaker		2 x 5W	2 x 2W	2 x 2W	2 x 2W	2 x 2W
Data Collection		Front MIPI 8.0MP camera, NFC	Front 2.0 MP camera, NFC, optional handset	Front 2.0 MP camera, NFC, handset	Front 2.0 MP camera, NFC	Front 2.0 MP camera, NFC
Wireless Communication		WiFi, BT	WiFi, BT	WiFi, BT	WiFi, BT	WiFi, BT
Power Requirement/Adapter		12V DC, 60W power adapter	12~24V DC, Power Over Ethernet/ 60W power adapter (optional)	12~24V DC, Power Over Ethernet/ 60W power adapter	12~24V DC, Power Over Ethernet/ 60W power adapter (optional)	12~24V DC, Power Over Ethernet/ 60W power adapter (optional)
Dimension (mm)		735.6 x 436.2 x 36.5	270 x 193 x 28	385 x 266 x 34	270 x 193 x 28	472.1 x 269 x 70.1
Weight (kg)		7.7	1.1	2.2	1.1	2.5
Mounting		VESA 100 x 100	VESA 75 x 75	VESA 75 x 75	VESA 75 x 75	VESA 75 x 75
Certification		CE, FCC	CE, FCC Class B	CE, FCC Class B	CE, FCC Class B	CE, FCC Class B
OS Information		Android 14	Android 11/ Debain 11	Android 11	Windows 10/11, ubuntu 24.04	Windows 10/11, ubuntu 24.04

Medical Tablet



Model Number	CAXA0
Processor	Intel® Celeron® N3350/4200 processor
System Memory	Onboard 4GB LPDDR4
Storage	64GB M.2 Solid State Drive (option up to 128GB)
I/O Ports	1 x audio jack, 2 x USB 2.0, 1 x micro SD, 1 x DC jack, 1 x HDMI output
Display	10.1" / 1280x800 / 300 nits / projective capacitive touch
Bluetooth/ WLAN	Bluetooth 5.0/ 802.11 a/b/g/n/ac
NFC	ISO/IEC 14443 A/B, 15693/18092, NFCIP-1, NFCIP-2, support MIFARE and Felica
Camera	2MP front camera, 8MP rear camera w/ auto focus
Barcode Scanner	1D/2D barcode scanner (optional)
Other	G-sensor, light sensor
Power Requirement/ Adapter	19V, 65W medical power adapter
Battery	28.44W Li-Polymer battery (6 hours)
Protection	IP 65, MIL-STD-810G standard vibration & shock test, 4-feet drop test
Dimensions (mm)	281 x 193.3 x 19.95
Weight (kg)	1.0
Certifications	EN60601-1, EN60601-1-2, CE, RED, FCC, VCCI/MIC, CCC/SRRC, BSMI/NCC, UKCA, ICES-003/IC, Australia RCM, Chile SUBTEL
OS Information	Windows 10/ Android 11
Optional Accessory	Wall mount, desktop credle, hand strap, shoulder strap

Medical Box PC / AI PC



Model Number		MAB-T690	MAB-T660D	MAB-T660	MAB-T600	MAB-T600-B1
Processor		12/13/14th & Series 2 Gen Intel® Core™ i9/i7/i5/i3 Processors	12/13/14th & Series 2 Gen Intel® Core™ i9/i7/i5/i3 Processors	12/13th Generation Intel® Core™ i9/i7/i5/i3 processors	12/13th Generation Intel® Core™ i9/i7/i5/i3 processors	12/13th Generation Intel® Core™ i9/i7/i5/i3 processors
Chipset		Intel® R680E chipset	Intel® H610E chipset	Intel® R680E chipset	Intel® H610E chipset	Intel® R680E chipset
System Memory		4 x 288-pin U-DIMM socket, DDR5 4400MHz up to 192GB (ECC memory support by CPU)	2 x SODIMM socket, DDR5 5600MHz up to 64GB, Non-ECC support (CPU Dependent)	2 x SODIMM socket, DDR5 4800MHz UDIMM up to 64GB, Non-ECC DRAM support	2 x DIMM slot, DDR5 4800/5600MHz UDIMM, up to 64GB	4 x DIMM slot, DDR5 4400MHz UDIMM with ECC support, up to 128GB
Expansion	PCIe	6 full height PCIe slots: 1 x Gen5 PCIe x16 (default) or 2 x Gen5 PCIe x8 (BIOS selection); 2 x Gen4 PCIe x4; 1 x Gen3 PCIe x4; 1 x Gen3 PCIe x2 (PCIe x4 slot)	1 x Gen4 PCIe x16	2 half height PCIe slots via riser card: 1 x Gen 4 PCIe x16 or 2 x Gen 4 PCIe x8	4 full height PCIe slots: 1 x Gen 5 PCIe x16 1 x Gen 3 PCIe x1 2 x Gen 3 PCIe x1	4 full height PCIe slots: 1 x Gen 5 PCIe x16 2 x Gen 4 PCIe x4 1 x Gen 3 PCIe x4
	M.2	2 x M.2 Key M 2242/2280/22110 NVMe (PCIe Gen4 x4, for storage only, no SATA)	1 x M.2 E-Key 2230 CNVi (PCIe x1 + USB 2.0) 1 x M.2 Key-M 2242/2280 NVMe (PCIex4, SATA3)	1 x Key M 242/2280/22110 NVMe, 1 x Key E 2230	1 x Key M 242/2280/22110 NVMe, 1 x Key E 2230	2 x Key M 242/2280/22110 NVMe, 1 x Key E 2230
Storage		4 x 2.5"/3.5" SATAIII drive bay	1 x 2.5" SATAIII drive bay	1 x 2.5" SATAIII drive bay	2 x 2.5"" SATAIII drive bay (2 x 3.5"" SATAIII drive bay as option)	2 x 2.5"" SATAIII drive bay (2 x 3.5"" SATAIII drive bay as option)
I/O Ports	USB Type C	-	-	-	-	1
	USB 3.2 Gen 2	8	-	4	-	6
	USB 3.2 Gen 1	-	2	4	4	-
	USB 2.0	2	4	2	4	2
	LAN By RJ-45	4 x 2.5 GbE	2 x 2.5GbE	4 x 2.5GbE	1 x 2.5 GbE, 1 x 1 GbE	2 x 2.5 GbE
	DP	2	1	2	2	4
	HDMI	1	1	1	1	-
Audio		Realtek Audio Code, 1 x Mic-in, 1 x Line-out				
Power		100-240V AC, 850W medical ATX PSU	19V DC, 180W medical adapter	100-240V AC, 400W medical ATX PSU	100-240V AC, 500W medical ATX PSU	
Dimension (mm)		437 x 433 x 189.2	315 x 273 x 92	315 x 273 x 92	330 x 344 x 160	330 x 344 x 160
Weight (kg)		9	4.8	4.8	7	7
Operating Temp.		0 ~ 40°C (32°F ~ 104°F) w/ SSD, Ambient w/ 0.5m/s air flow	0°C ~ 40°C (32°F ~ 104°F) with 0.5m/s air flow	0 ~ 35°C (32°F ~ 95°F) w/ SSD, Ambient w/ 0.5m/s air flow	"0 ~ 40°C (32°F ~ 104°F) w/ SSD, Ambient w/ 0.5m/s air flow	0 ~ 40°C (32°F ~ 104°F) w/ SSD, Ambient w/ 0.5m/s air flow
Certification		CE: EN/IEC 62368-1 FCC Class A	CE: EN/IEC 62368-1 FCC Class A	CE: EN/IEC 62368-1 FCC Class A	CE: Medical EMC/Safety (EN/IEC 60601-1, 60601-1-2) EN/IEC 62368-1 FCC Class B	CE: Medical EMC/Safety (EN/IEC 60601-1, 60601-1-2) EN/IEC 62368-1 FCC Class B
OS Information		Win 10, Win 11, Linux	Win 10, Win 11, Linux	Win 10, Win 11, Linux	Win 10, Win 11, Linux	Win 10, Win 11, Linux
Compatible Add-on Card List	Graphic Card	NVIDIA RTX5000 Ada PCIe x16 NVIDIA RTX5090 Blackwell PCIe x16 NVIDIA RTX4000 Ada PCIe x16 NVIDIA RTX4000 SFF Ada PCIe x16 NIVIDIA RTX2000 Ada PCIe x8 NVIDIA A1000 PCIe x16	NVIDIA RTX4000 SFF Ada NVIDIA RTX2000 Ada NVIDIA T1000		NVIDIA RTX4000 Ada NVIDIA RTX4000 SFF Ada NVIDIA RTX2000 Ada NVIDIA T1000	
	Capure Card	YUAN SC400N2-L HDMI 2CH 1080p YUAN SC400N4 HDMI 4CH 1080p YUAN SC710N2-L HDMI 2CH 4K YUAN SC410N4 HDMI 4CH 4K				
	LAN/POE/WIFI Card	Intel 82574 1CH LAN Card Intel I350AM2 2CH LAN Card Intel I210 PoE Card PCIe WIFI 6/6E Module Kit/Set	Intel 82574 1CH LAN Card Intel I350AM2 2CH LAN Card Intel I210 PoE Card PCIe WIFI 6/6E Module Kit/Set		Intel 82574 1CH LAN Card Intel I350AM2 2CH LAN Card Intel I210 PoE Card PCIe WIFI 6/6E Module Kit/Set PCIe 5G Module Set	

Medical Monitor



Model Number		RCC-MS-GMD23G(T)-01R	RCC-MS-GMD27G(T)-01R	RCC-MS-GMD27G(T)-03R	RCC-MS-GMD32G(T)-01R	RCC-MS-GMD55G(T)-01R	RCC-MS-GMD65G(T)-01R
Size		23.8"	27"	27"	32"	55"	65"
Resolution		1920 x 1080	1920 x 1080	3840 x 2160	3840 x 2160	3840 x 2160	3840 x 2160
Brightness	AR Glass	-	930 nits	740 nits	780 nits	-	-
	AG Glass	230 nits	-	-	-	460 nits	460 nits
	AG Touch	220 nits	850 nits	700 nits	750 nits	440 nits	440 nits
Contrast Ratio		3000:1	1000:1	1000:1	1500:1	4000:1(typical)	4000:1(typical)
Viewing Angle		178° / 178° (typical)	178° / 178° (typical)	178° / 178° (typical)	178° / 178°	178° / 178° (typical)	178° / 178° (typical)
Color Temperature		Cool/neutral/warm/ user	Cool/neutral/warm/ user	Cool/neutral/warm/ user	Cool/neutral/warm/ user	Cool/neutral/warm/ user	Cool/neutral/warm/ user
Gamma Correction		Gamma 1.8/2.0/2.2/2.4/linear	Gamma 1.8/2.0/2.2/2.4/linear & DICOM	Gamma 1.8/2.0/2.2/2.4/linear & DICOM	Gamma 1.8/2.0/2.2/2.4/linear & DICOM	Gamma 1.8/2.0/2.2/2.4/linear	Gamma 1.8/2.0/2.2/2.4/linear
Video Input	DP	1	1	1	2	2	2
	HDMI	1	1	1	1	-	1
	DVI	1	1	1	1	4	1
	VGA	1	1	1	1	1	1
Video Output	DP	-	-	-	1	-	1
	DVI	-	-	-	1	-	1
Optional I/O		-	-	-	3G-SDI & 12G-SDI video input/output	-	3G-SDI & 12G-SDI video input/output
Speaker		2 x 0.5W	2 x 2W	2 x 2W	2 x 5W	-	-
Other		-	Color calibration, ALS (brightness stabilizer)	PIP/PBP, Color calibration, ALS (brightness stabilizer)	PIP/ PBP/ Quad-mode support, color calibration, ALS (brightness stabilizer)	PIP/ PBP/ Quad-mode support	PIP/ PBP/ Quad-mode support
Power Requirement		24V DC/ 65W medical power adapter	24V DC/ 90W medical power adapter	24V DC/ 150W medical power adapter	24V DC/ 150W medical power adapter	100~250V AC	100~250V AC
Dimension (mm)		587.0 x 367.5 x 59.5	660.2 x 408.8 x 65.8	660.2 x 408.76 x 52.9	764.2 x 468.6 x 79.0	1314 x 785 x 85	761.2 x 465.6 x 61.5
Weight (kg)		6.8	8	7.5	11	39	11
Mounting		VESA 100x100	VESA 100x100	VESA 100x100	VESA 100 x 100/ 200 x 100	VESA 400 x 400	VESA 600 x 400
IP Rating		Front IP65	Front IP65	Front IP65	Front: IP65 Whole unit: IP32	Front IP65	Front: IP65 Whole unit: IP32
Certification		CE Medical EMC & Safety, FCC Class B, VCCI, CCC cTUVus (ANSI/AAMI ES60601-1 ed 3.2; CAN/CSA C22.2 NO.60601-1 ed 3.2)	CE Medical EMC & Safety, FCC Class B, VCCI cTUVus (ANSI/AAMI ES60601-1 ed 3.2; CAN/CSA C22.2 NO.60601-1 ed 3.2) DIN6868-157 compliant	CE Medical EMC & Safety, FCC Class B, VCCI UL/cUL (ANSI/AAMI ES60601-1 ed.3.2; CAN/CSA C22.2 NO.60601-1:14 ed. 3.2) DIN6868-157 compliant	CE Medical EMC & Safety, FCC Class B UL/cUL (ANSI/AAMI ES60601-1 ed.3.2; CAN/CSA C22.2 NO.60601-1:14 ed. 3.2) DIN6868-157 compliant	CE Medical EMC & Safety, CE (EN 62368-1; EN 55032/55035) FCC Class B, VCCI	CE Medical EMC & Safety, CE (EN 62368-1; EN 55032/55035) CC Class B, VCCI

Medical Cart & Power System



Model Number	RCC-ECOSTAND-02R	RCC-GENISTAND-01R	RCC-GENICART-02R
Description	Light Device Stand	Heavy Device Stand	Powered Workstation
Height	1185 mm to 1585 mm - adjustable 400 mm	1155 mm to 1555 mm - adjustable 400 mm	767 mm to 1067 mm - adjustable 300 mm
Base Size	550 mm diameter	4 castors - 557 x 561 mm 5 castors - 675 diameter	675 mm diameter
Max Carrying Load	10 kg (subject to height)	15 kg (subject to height)	20 kg (subject to height)
Casters	5 x 75 mm braked casters	5 x 100 mm braked casters 4 x 100 mm braked casters	5 x 100 mm braked casters 4 x 100 mm braked casters
Optional Accessory	Handle, basket, medi-rail, cable hook, drip pole, PSU adapter holder, keyboard tray	Handle, basket, medi-rail, cable hook, drip pole, PSU adapter holder, keyboard tray	Handle, basket, medi-rail, cable hook, drip pole, PSU adapter holder
Power System	Optional: Geni-Tec P.O.P (Power-On-Pole) single & dual dock	Geni-Tec P.O.P (Power-On-Pole) single & dual dock	Geni-Tec P.O.P (Power-On-Pole) Dual Dock, adjustable 12V-28V regulated output, up to 432 Wh power capacity (battery modules supplied separately) * Model with P.O.P single dock available
Compliance	CE, UKCA	CE, UKCA	CE, UKCA



Model Number	EPB-1001
Description	Add-on Medical Power System
Power Capacity	184 Wh, two hot-swappable battery packs incl.
Output Current Per Battery	6.8A
Output Voltage Per Battery	14.4V
Output Power	12 or 19V DC-out, 80W
USB Port	Type A
Charge Input	24 DC/ 5A
Charge Current	4A max. for 2 batteries
Charge Voltage	16.8 V
Power Connector	DC jack with lock
Indicator Light	Power/ Battery 1/ Battery 2
Color	White
Dimension (mm)	235 x 182 x 43
Weight (kg)	1.2
Certification	CE/ FCC/ ANSI/ AAMI ES 60601/ CAN/ CSA C22.2 No. 60601-1
Optional Accessory	Battery pack, VESA bracket kit, AC/DC 24V/5A 120W adapter

Model Number	RCC-BAT-GENI-01R
Description	Battery Module, work with Geni-Tec P.O.P (Power-On-Pole)
Output Voltage	21.6 V (typ)
Power Output	Adjustable regulated output 12-28V
Power Capacity	216 Wh
Charge Capacity	10 Ah
Recharge Time	2.5 hrs (typ) @ 4 A
Operating Temperature	1°C to 40°C (34°F to 104°F)
Storage Temperature	-10°C to 35°C (14°F to 95°F)
Battery Chemistry	Polymer Lithium-Ion (NMC)
IP Rating	IP67
Charge Status Display	LED 10 Segment Bargraph
Standby Switch	Capacitive Touch
Compliance	UKCA, CE, IEC 62133, UN38.3, UL 2054
Net Weight (kg)	2
Optional Accessory	Geni-Tec Single Bay / Dual Bay / Quad Bay Charger Geni-Tec 220W AC/DC Power Supply (For charger only)

About Avalue Healthcare

Avalue Healthcare, an affiliate of Avalue Technology, leverages the design capability, project management, supply chain & production resources, and global sales network, to develop and distribute dedicated medical products covering medical panel PCs & tablets, medical displays, medical box PCs and AI PCs.



7F, No. 228, Lian-cheng Road, Zhonghe
Dist., New Taipei City 235, Taiwan
www.avalue-healthcare.com
sales@avalue-healthcare.com
Tel: +886-2-8226-2345
Fax: +886-2-8226-2777